

# Spring Newsletter 2011

## Flea Season

The warmer days of spring are here the fleas begin to hatch and infest our pets and living areas. We suggest starting flea prevention for your pets before the winter's end.

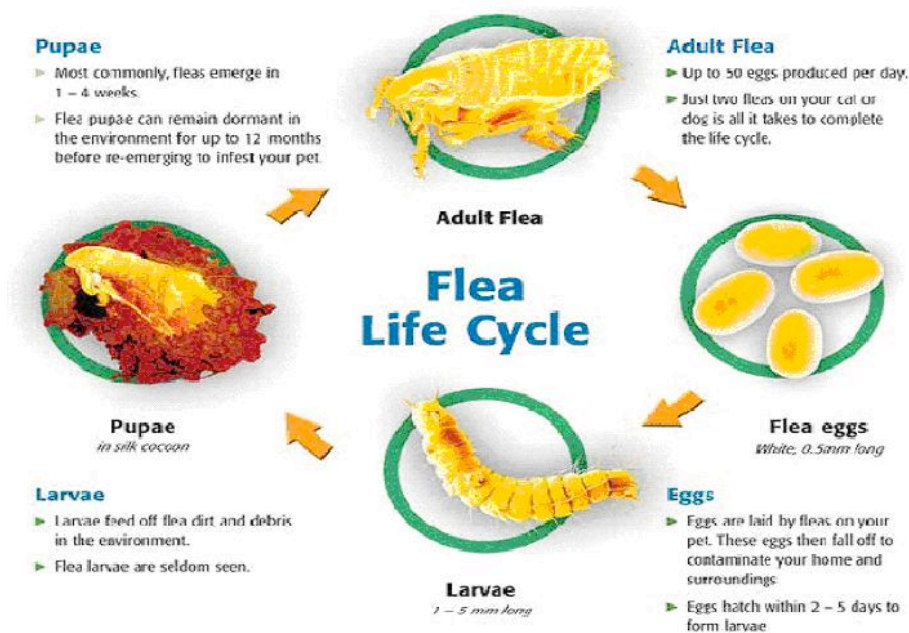
### How can you tell if your animal has fleas?

The symptoms that an animal experience when they have fleas can vary depending on if they are allergic to the flea saliva. An animal that is not allergic may not even itch if infested with fleas. On the other hand, an animal that is highly allergic to the flea saliva may itch and scratch excessively even after one flea bite. Most animals that have fleas will either have the presence of a black pepper substance on the fur, or they will be scratching and/or chewing at the back end of their body.

### What is the recommendation for flea prevention & control?

We carry a new flea and heartworm monthly tablet combination Trifexis (canine), Vectra-3D (canine), Comfortis (canine), Capstar (canine and feline) and Revolution (feline). We recommend that you use one of these flea preventatives once monthly to all animals in the environment. Your house and yard may need to be treated as well if flea infestation is not controlled by preventatives.

### What is the flea life cycle?



### What problems can fleas cause?

Fleas can be the host of tapeworms. When the infected tapeworm eggs are released into the environment, they have to be swallowed by immature flea larvae. Once inside the larval stage of the flea, the tapeworm egg continues to develop into an infective tapeworm as the flea matures into an adult flea. During grooming or in response to a flea's bite, the dog or cat can ingest the flea carrying the infective tapeworm and the life cycle is completed.

Fleas can also cause anemia in young or emaciated animals. A single female flea can take up to 15 times her body weight in blood over the several weeks of her adult life.

Flea allergic dermatitis is a common problem seen. Symptoms include, but are not limited to excess scratching generally over the rear half of the body. This scratching can cause the skin to become red and irritated, hair loss, and even sores.

## **Heartworm Disease**

Heartworms are deadly and one of the most common of all canine parasites. Heartworm disease spreads when mosquitoes bite an infected dog and then pass it along to other animals even cats. Since mosquitoes can easily get indoors, all domestic cats are at risk.

### **Symptoms may include:**

- Vomiting
- Coughing
- Difficulty breathing
- Lethargy
- Weight Loss
- Collapse or convulsions
- Sudden death

Please have your pet heartworm tested yearly and use preventatives year round to ensure they are protected from heartworm disease.

We carry a new heartworm and flea monthly tablet combination Trifexis (canine), Sentinel (canine), Interceptor (canine and feline), and Revolution (feline).

With an exam and heartworm testing we are offering the following:

### **Spring Special**

**10% off any full box of flea or heartworm preventative**

**1 box per client**

**Expires April 30, 2011**